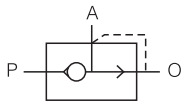




Symbol



P-In(connect with change vave)
A-Out(connect with cylinder)
O-Out(connect with muffler)

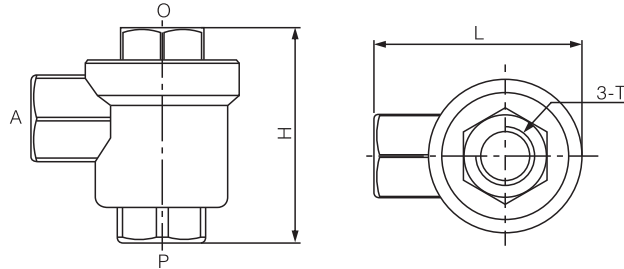
purpose

This fast exhaust valve is suitable for pneumatic industry, mainly used for cylinder. It is used to achieve fast and fast movement of cylinders, so as to improve working efficiency. It has low temperature resistance (-35°C~60°C) and wear resistant spool, and we can customize products with NPT threadspecifications.

Specification

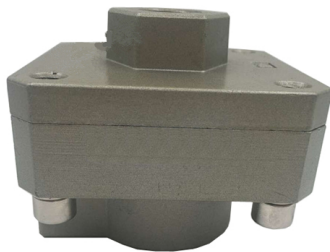
Model	XQ0600	XQ0600	XQ1000	XQ1500
Port size	G1/8	G1/4	G3/8	G1/2
Orifice size (mm)	6	8	10	15
flow (m ³ /min)	≥0.5	≥0.9	≥2.5	≥4.5
Environment and liquid temperature (°C)	5-60	Wear-resistant valve core	-30~60	Low temperature resistant valve core
Durable (Million times)	≥200	Wear-resistant valve core	≥100	Low temperature resistant valve core
Working pressure range	0.2-1.0Mpa Resistance to pressure 1.5Mpa			
Commutation time (S)	≤0.01	≤0.03	≤0.04	≤0.05

Dimensions

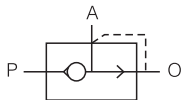


Model/Item	T(Interface)	H	L
XQ0600	G1/8	51	44
XQ0600	G1/4	51	44
XQ1000	G3/8	62	61
XQ1500	G1/2	78	75

AQ Series Fast Exhaust Valve



Symbol



P-In(connect with change vave)
A-Out(connect with cylinder)
O-Out(connect with muffler)

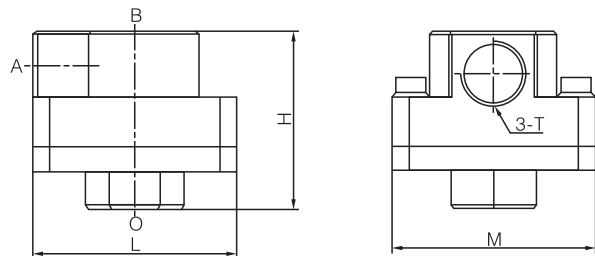
purpose

This fast exhaust valve is applied to the pneumatic industry, mainly used in cylinder, which is used to realize the fast forward movement of the cylinder, so as to improve the working efficiency. (for this product we provide G thread and NPT thread interface)

Specification

Model	AQ2000-01	AQ2000-02	AQ3000-02	AQ3000-03	AQ5000-04	AQ5000-06
Port size	G1/8	G1/4	G1/4	G3/8	G1/2	G3/4
Temperature °C	5~60					
Operating pressure	0.15~1.0MPa					
Proof pressure	1.5MPa					

Dimensions



Model/Item	T(Interface)	M	L	H
AQ2000-01/02	G1/8 G1/4	45	45	40
AQ3000-02/03	G1/4 G3/8	56	56	50
AQ5000-04/06	G1/2 G3/4	85	85	75

Flow list

Model/Item	T(Interface)	Orifice size(mm ²)		weight(g)
		In→Out	Out→exhaust	
AQ2000-01	G1/8	25	25	110
AQ2000-02	G1/4	35	40	105
AQ3000-02	G1/4	40	42	215
AQ3000-03	G3/8	60	70	205
AQ5000-04	G1/2	105	115	690
AQ5000-06	G3/4	135	180	690