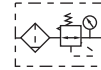


Symbol



Product feature

1. The structure is delicate and compact, which is convenient for installation and application.
2. The pressed-in self-locking mechanism can prevent the abnormal movement of the set pressure caused by external interfere.
3. The pressure loss is low and the efficiency of water separating is high.
4. In addition to standard type, lower pressure type is optional(The highest adjustable pressure is 0.4MPa).

Ordering code

| | | | | | | | | | |
|------------------|-----------------------------|--------------------|------------|--------------------------|--------------------------|-----------------------|---|--------------------------|-------|
| AFR | | 2000 | M | <input type="checkbox"/> | <input type="checkbox"/> | 1 | W | <input type="checkbox"/> | |
| Model | | Port size | | Type code | | Pressure gauge | | Filtering grade | |
| AFR | A Series Filter & regulator | Series | Port size | Blank | Standard(0.9MPa) | Blank | Pressure gauge | Blank | 40µm |
| BFR | B Series Filter & regulator | AFR | 1500: 1/8" | L | Lower pressure(0.4MPa) | N | No pressure gauge | W | 5µm |
| Port size | | Accessories | | Drain type | | Scale | | Thread type | |
| Series | Port size | Blank | Bracket | Series | Drain type | 1 | Mpa | Thread type | Scale |
| AFR | 2000: 1/4" | J | No bracket | AFR | Blank: Semi-auto drain | 2 | psi | Blank | PT |
| | 2000: 1/4" | | | | M: Manual drain | 3 | bar | G | G |
| BFR | 3000: 3/8" | | | | Blank: Semi-auto drain | 4 | Double scale(psi, kgf/cm ²) | T | NPT |
| | 4000: 1/2" | | | | M: Manual drain | | | | psi |
| | | | | | A: Automatic drain | | | | |

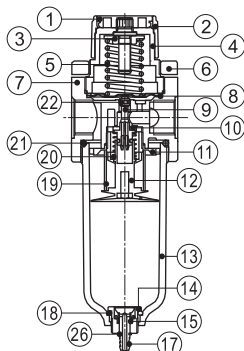
Specification

| Model | AFR1500 | AFR2000 | BFR2000 | BFR3000 | BFR4000 |
|------------------------|---|---------|---------|---------|---------|
| Fluid | Air | | | | |
| Port size | PT1/8 | PT1/4 | PT1/4 | PT3/8 | PT1/2 |
| Filtering grade | 40µm or 5µm | | | | |
| Pressure range | Semi-auto and automatic drain:0.15~0.9MPa(20~130psi); Manual drain: 0.05~0.9MPa(7~130psi) | | | | |
| Max. pressure | 1.0MPa(145psi) | | | | |
| Proof pressure | 1.5MPa(215psi) | | | | |
| Temperature range | -5~70°C | | | | |
| Capacity of drain bowl | 15CC | | 60CC | | |
| Weight | 260g | | 400g | | |

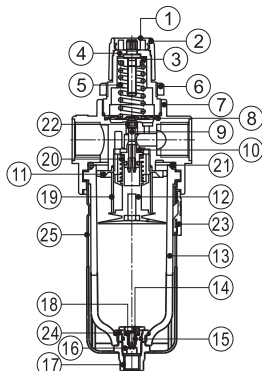
① PT thread, G thread and NPT thread are available.

Inner structure and material of major parts

AFR

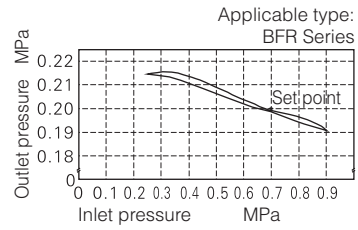
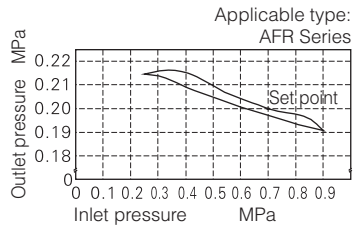


BFR

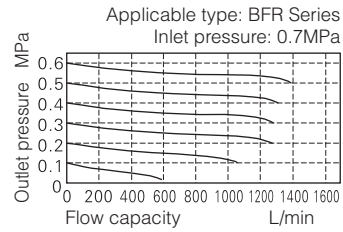
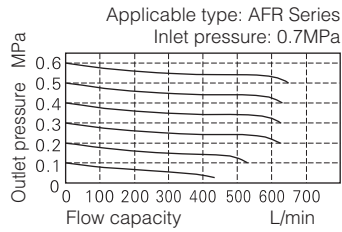


| No. | Item | Material | No. | Item | Material |
|-----|------------------|-------------------------|-----|-------------------|----------------------------------|
| 1 | Push button | POM | 15 | Return spring | Stainless steel |
| 2 | Adjusting button | POM | 16 | Drain seat | POM |
| 3 | Adjusting nut | Steel | 17 | Drain pillar | POM |
| 4 | Adjusting seat | POM | 18 | Drain O-ring | NBR |
| 5 | Adjusting spring | SWC | 19 | Filter element | 40µm Madrolon fiber |
| 6 | Fixed ring | POM | | | 5µm Agglomerated by bronze grain |
| 7 | Body | Aluminum alloy | 20 | Return spring | Stainless steel |
| 8 | Diaphragm | SUS304 & rubber | 21 | Drain bowl O-ring | NBR |
| 9 | Balance needle | POM | 22 | Needle O-ring | NBR |
| 10 | Needle gasket | Aluminum alloy & rubber | 23 | Bowl guard switch | POM |
| 11 | Air guider | POM | 24 | Gasket | POM |
| 12 | Umbrella baffle | POM | 25 | Bowl guard | PA66 |
| 13 | Drain bowl | PC | 26 | Clip | Spring steel |
| 14 | Drain kit | POM | | | |

Pressure chart



Flow chart

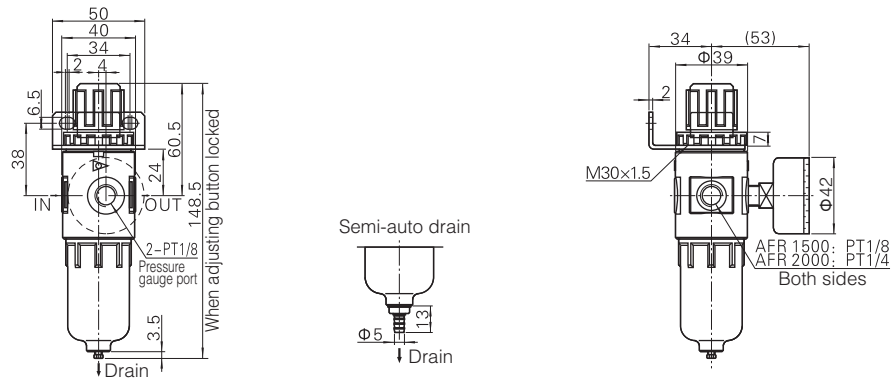


Selection of drain mode

The drain modes of different series are different.
Please refer to AC/BC for details.

Dimensions

AFR



BFR

