



Specification

Model	HSV06	HSV08	HSV10	HSV15	HSV20	HSV25
Fluid	Air (to be filtered by 40 μm filter element)					
Operating	Manual control direct acting type					
Port size ①	PT1/8	PT1/4	PT3/8	PT1/2	PT3/4	PT1
Orifice size	23.0mm ² (Cv=1.28)	40.0mm ² (Cv=2.20)	62.0mm ² (Cv=3.50)	140.0mm ² (Cv=7.80)	250.0mm ² (Cv=13.80)	392.0mm ² (Cv=21.78)
Valve type	3/2 Way					
Lubrication	Not required					
Pressure range	0~1.0MPa(0~145psi)					
Proof pressure	1.5MPa(215psi)					
Temperature	-20~70°C					
Material body	Aluminum alloy					

① PT thread, G thread and NPT thread are available.

Symbol



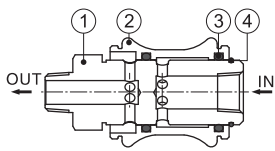
Flow chart

1. There are several ways of internal thread connection, suitable for the application in different pipeline systems.
2. The direction-change slides smoothly and has good hand feeling.
3. There is large effective circulating area.
4. The valve spool surface is treated with acid washing passivation, and the surface of valve body is oxidized to keep the color for a long time.

Ordering code

HSV		08	SS		
Model		Port size	Dovt thread		Thread type
HSV	Hand slide valve	06 1/8"	Blank	Standard	Blank PT
		08 1/4"	SS	Double male thread	G G
		10 3/8"	FF	Double female thread	T NPT
		15 1/2"	SF	Male and female thread	
		20 3/4"			
		25 1"			

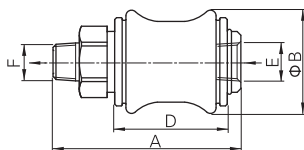
Inner structure



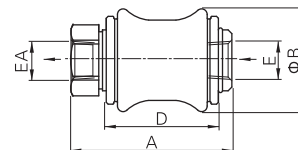
No.	Item
1	Valve plug
2	Body
3	O-ring
4	Clip

Dimensions

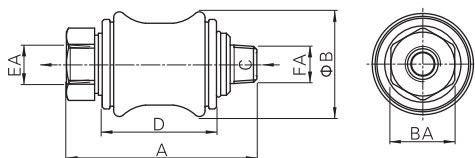
Standard



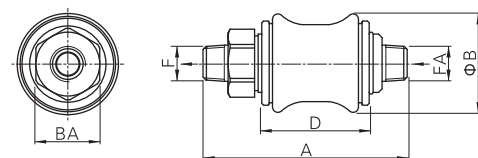
Double female thread(FF)



Male and female thread(SF)



Double male thread(SS)



Model/Item	A				B	BA	D	E	EA	F	FA
	Standard	Double female thread	Male and female thread	Double male thread							
HSV06	50	43	50	57	27.5	17	30	PT1/8	PT1/8	PT1/8	PT1/8
HSV08	58	47	58	69	30	19	32.5	PT1/4	PT1/4	PT1/4	PT1/4
HSV10	68.5	55.5	68.5	81.5	35.5	22	39	PT3/8	PT3/8	PT3/8	PT3/8
HSV15	85.5	70.5	85.5	100.5	44	30	50	PT1/2	PT1/2	PT1/2	PT1/2
HSV20	96.5	79.5	96.5	113.5	53.5	36	58	PT3/4	PT3/4	PT3/4	PT3/4
HSV25	114.5	96.5	114.5	132.5	65.5	44	70	PT1	PT1	PT1	PT1