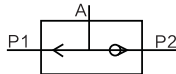




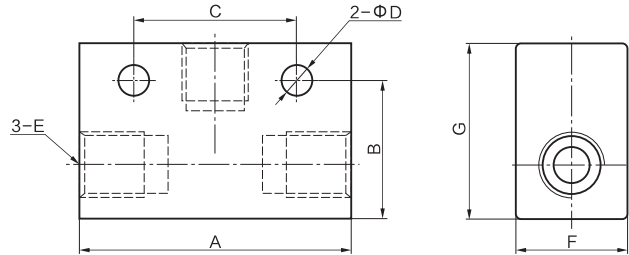
### Specification

Model	ST-01	ST-02	ST-03	ST-04	ST-06	ST-08
Port size	G1/8	G1/4	G3/8	G1/2	G3/4	G1
Orifice size	7.5mm <sup>2</sup>	21mm <sup>2</sup>	40mm <sup>2</sup>	60mm <sup>2</sup>	110mm <sup>2</sup>	190mm <sup>2</sup>
Operating pressure	0~0.95MPa(0~135psi)					
Proof pressure	1.5MPa(213psi)					
Temperature °C	-5~60(28~140° F)					
Material of body	Aluminium alloy					

### Symbol



### Dimensions



### Ordering code

Model	Port size	Thread type
ST Shuttle valve	01 G1/8	Blank PT
	02 G1/4	G G
	03 G3/8	T NPT
	04 G1/2	
	06 G3/4	
	08 G1	

Model/Item	A	B	C	D	E	F	G
ST-01	40	20.5	24	Φ4.5	G1/8	16	25
ST-02	50	25	35	Φ5.5	G1/4	22	35
ST-03	75	42	48	Φ7	G3/8	30	50
ST-04	75	42	48	Φ7	G1/2	30	50
ST-06	110	58	72	Φ7	G3/4	40	70
ST-08	110	58	72	Φ7	G1	40	70

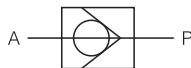
## KAICV Series Unidirectional Valve



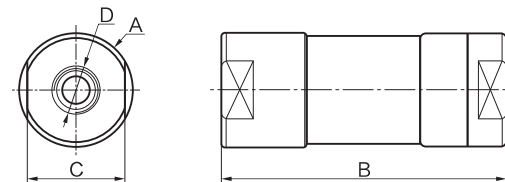
### Specification

Model	KA-06	KA-08	KA-10	KA-15	KA-20	KA-25
Fluid	Air(to be filtered by 40µm filter element)					
Port size	G1/8	G1/4	G3/8	G1/2	G3/4	G1
Orifice size	10mm <sup>2</sup>	20mm <sup>2</sup>	40mm <sup>2</sup>	60mm <sup>2</sup>	100mm <sup>2</sup>	190mm <sup>2</sup>
Operating pressure	0.15~0.8MPa(21~114psi)					
Proof pressure	1.5MPa(215psi)					
Temperature °C	-20~70					
Material of body	Aluminium alloy					

### Symbol



### Dimensions



### Ordering code

Model	Port size	Thread type
KA Unidirectional valve	06 G1/8	Blank PT
	08 G1/4	G G
	10 G3/8	T NPT
	15 G1/2	
	20 G3/4	
	25 G1	

Model/Item	A	B	C	D
KA-06	25.2	63	21.6	G1/8
KA-08	25.2	63	21.6	G1/4
KA-10	38.5	84	34.6	G3/8
KA-15	38.5	84	34.6	G1/2
KA-20	55	110.5	46	G3/4
KA-25	55	110.5	46	G1