



AD402-S

### Range of application

This product often applies to auto remove the water at the lower places of pipeline , frozen type air drying machine , oil separator , air drying tanks and the bottom of various air filters ,can be installed in the places inconvenient for manual discharge. Such as higher , lower and narrow places , especially there is large consumption of air of frequent water drains . It can prevent the compressed air being repolluted by condense water resulting from neglect of manual drain

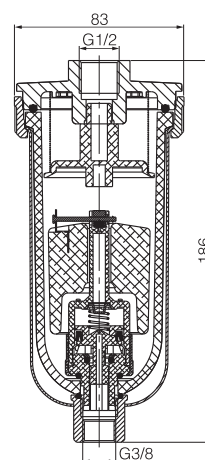
### Product feature

Automatic drain; Air shut off drain.

### Points for attention

When using, the drainer should be installed vertically and the drain port facing down.

### Dimensions



### Specification

Model	AD402-S-02	AD402-S-03	AD402-S-04
Ensured pressure resistance	1.5MPa		
Operating pressure	0.3-0.8MPa		
Ambient and fluid temperature	5-60℃		
Port size	G1/4	G3/8	G1/2
Drain size	G3/8		
Drain status	Normal open type		
Working medium	Compressed air		



AD402-X

### Range of application

This product often applies to auto remove the water at the lower places of pipeline , frozen type air drying machine , oil separator , air drying tanks and the bottom of various air filters ,can be installed in the places inconvenient for manual discharge. Such as higher , lower and narrow places , especially there is large consumption of air of frequent water drains . It can prevent the compressed air being repolluted by condense water resulting from neglect of manual drain

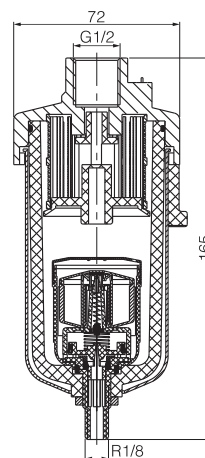
### Product feature

Automatic drain; Air shut off drain.

### Points for attention

When using, the drainer should be installed vertically and the drain port facing down.

### Dimensions



### Specification

Model	AD402-X-02	AD402-X-03	AD402-X-04
Ensured pressure resistance	1.5MPa		
Operating pressure	0.2-0.8MPa		
Ambient and fluid temperature	5-60℃		
Port size	G1/4	G3/8	G1/2
Drain size	G3/8		
Drain status	Normal open type		
Working medium	Compressed air		



**AH402**

### Specification

Model	AH402-02	AH402-03	AH402-04
Ensured pressure resistance	2.5MPa		
Operating pressure	0.15-2.0MPa		
Ambient and fluid temperature	5-60°C		
Port size	G1/4	G3/8	G1/2
Drain size	G1/8	G1/4	G3/8
Drain status	Normal open type		
Working medium	Compressed air		

### Range of application

This product is a drainage device belongs to high pressure air system ,for the whole pipeline system , commonly used in the inconvenience of manual for water drainage of high frequency equipment , such as the lower part of pipe , refrigerated air dryer , water tank and so on

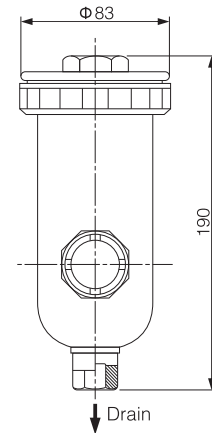
### Product feature

Automatic drain;  
metal cup is equipped with a visual window.

### Points for attention

When using, the drainer should be installed vertically and the drain port facing down.

### Dimensions



## AD-5 Series End Automatic Drainer



**AD-5**

### Specification

Model	AD-5
Ensured pressure resistance	1.5MPa
Operating pressure	0.29-0.98MPa
Ambient and fluid temperature	2-60°C
Port size	Rc1/2
Drain size	Rc1/2
Drain status	Normal open type
Working medium	Compressed air

### Range of application

This product often applies to auto remove the water at the lower places of pipeline , frozen type air drying machine , oil separator , air drying tanks and the bottom of various air filters ,can be installed in the places inconvenient for manual discharge. Such as higher , lower and narrow places , especially there is large consumption of air of frequent water drains . It can prevent the compressed air being repolluted by condense water resulting from neglect of manual drain

### Product feature

High reliability forced drainage system; Automatic drain;  
The water cup is provided with metal protective cover.

### Points for attention

When using, the drainer should be installed vertically and the drain port facing down.

### Dimensions

